



Talamanca Residential Complex: Quadplex

LUXURY REAL ESTATE



IBIZA PRIVATE VILLA



TALAMACA HOUSING COLLECTION

The flats collection in this stunning new building in Talamanca consists of eight stunning ground floor apartments and eight luxurious penthouses.

Each apartment has been cared for in every detail starting from the south-east exposure with a breathtaking view of the sea.

The Mediterranean style blends with the international urban character of the city of Ibiza and from this wonderful location everything is close at hand.



TALAMACA HOUSING COLLECTION

The luxurious complex, located in Talamanca just 2 km from the center of the city of Ibiza and a few steps from Marina di Botafoch. The wonderful beach, with soft sand banks and crystal clear waters, is crossed by a wooden walkway, facilitating access from both ends. Excellent choice of bars and restaurants for the entire route. Some are open all year round making Talamanca very popular even in the winter months.

16 Exclusive sea view apartments
500 meters from the beach





ARCHITECTURE

Modern and minimalist, the complex synthesizes the fusion of the Mediterranean style of the island and the cosmopolitan character of the island. Care in design and aesthetics with particular attention to the optimization of functionality.

Large open-plan spaces, unique materials and high-quality finishes create harmonious living spaces that integrate perfectly with the natural environment. Lighting expertly designed to make the most of natural light and the island's views, evoking a feeling of space, calm and freedom.

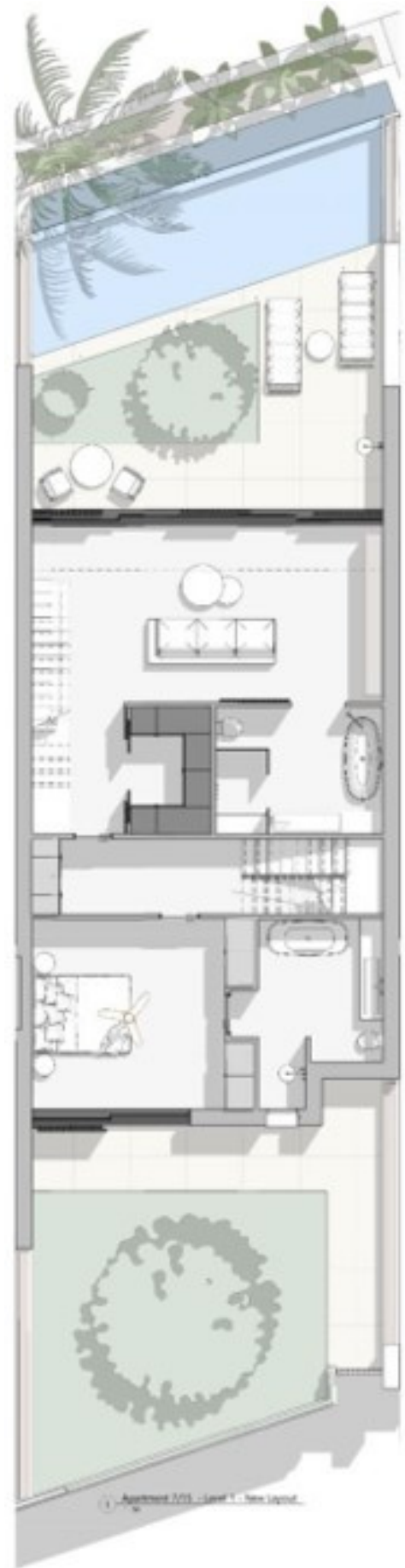
THE GARDENS

The gardens of the complex have been wisely designed, enhancing the Mediterranean nature of the island in all comfort.

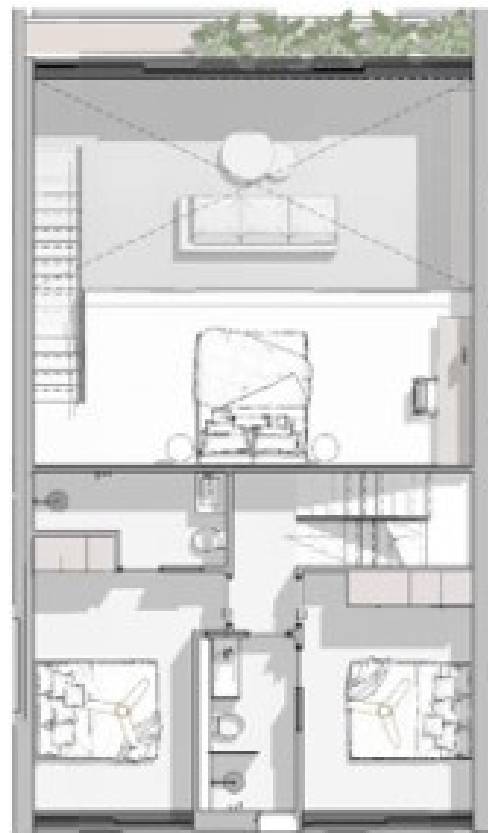
Tropical palms and wild sea grasses sway in the Mediterranean breeze, water-wise succulents respect the environment and soft grass provides grounding on a daily basis. Tropical palms and wild sea grasses sway in the Mediterranean breeze, water-wise succulents respect the environment and soft grass provides grounding on a daily basis.



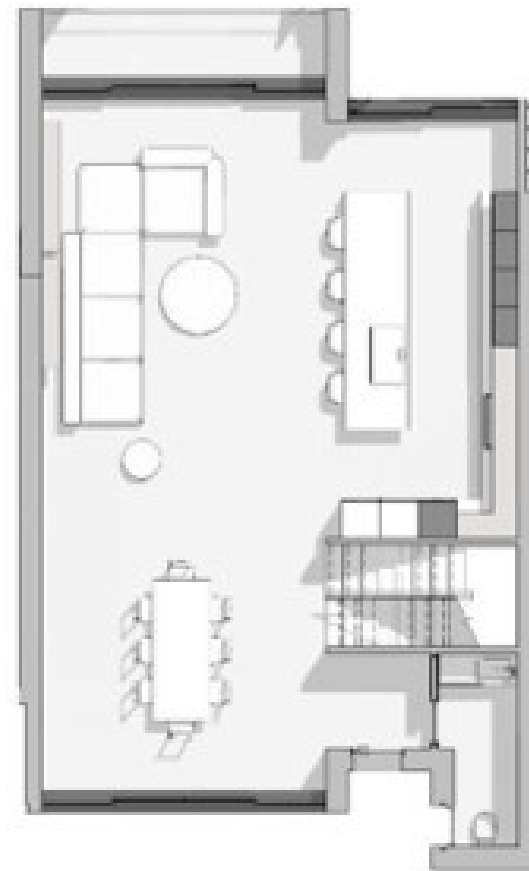
APARTMENT 7/15



First Floor



Second Floor



Third Floor



Ground Floor

Quadplex / Town House
4 bedrooms / 4 bathrooms
4 Floors / 2 Private Pools

Constructed size: 266m²

Ground Garden size: 83m²

Ground Pool size: 20m²

Rooftop Garden size: 70m²

Rooftop Pool size: 12m²



IBIZA PRIVATE VILLA





IBIZA PRIVATE VILLA







IBIZA PRIVATE VILLA



IBIZA PRIVATE VILLA



IBIZA PRIVATE VILLA



IBIZA PRIVATE VILLA



IBIZA PRIVATE VILLA





IBIZA PRIVATE VILLA



IBIZA PRIVATE VILLA

For any further detail or any other enquiry and pictures feel free to get in touch to us at anytime.

Thanks.

Tel: +34 676029983

info@ibizaprivatevilla.com

www.ibizaprivatevilla.com



Talamanca Residential Complex

LUXURY REAL ESTATE



IBIZA PRIVATE VILLA